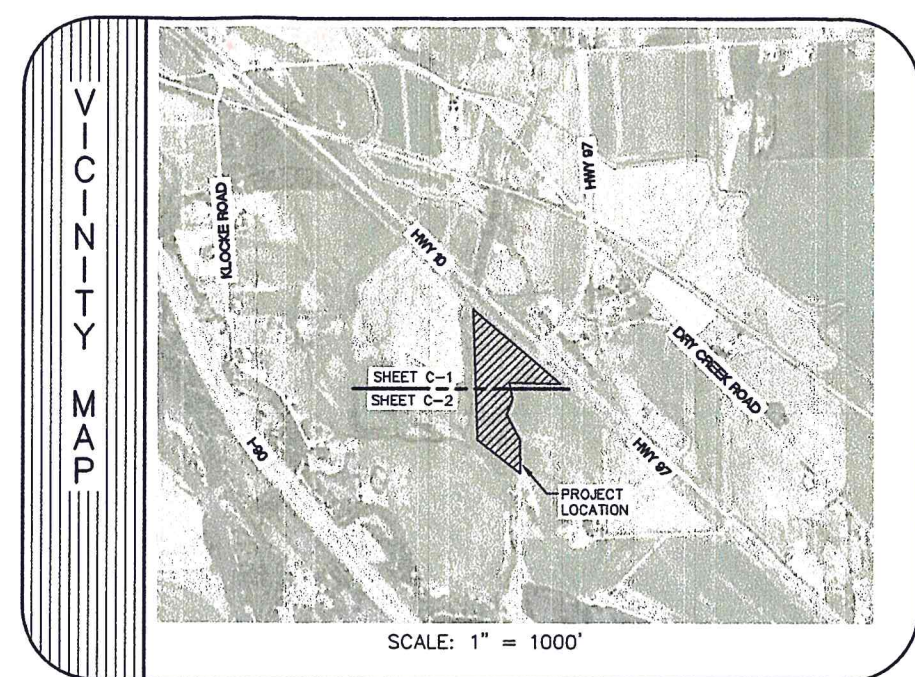


RECEIVED
SEP 26 2014
KITITAS COUNTY
CDS

| EXISTING | | PROPOSED |
|------------|---------------------|-----------|
| ————— | CENTERLINE | ————— |
| - - - - - | EDGE OF GRAVEL | - - - - - |
| ————— | PARCEL LINE | ————— |
| ————— 1580 | MAJOR CONTOURS | |
| - - - - - | MINOR CONTOURS | |
| — X — X — | FENCE | — X — X — |
| - - - - - | WETLAND | |
| - - - - - | WETLAND BUFFER | |
| - - - - - | 100 YEAR FLOOD ZONE | |
| - - - - - | STREAM BUFFER | |
| ⊕ | UTILITY POLE | ⊕ |

| DWG | SHEET | TITLE |
|-----|-------|--------------|
| G-1 | 1 | COVER |
| C-1 | 2 | GRADING PLAN |
| C-2 | 3 | GRADING PLAN |
| E-1 | 4 | EXHIBIT 1 |
| E-2 | 5 | EXHIBIT 2 |



PROJECT INFORMATION

LOCATION: SECTION 20, T. 18N, R. 18E W.M.
KITITAS COUNTY, WA

PARCEL: 346233

SIZE: 13.6 ACRES TOTAL
6.0 ACRES UTILIZED

PROPOSED USE: POWER GENERATING FACILITY

TOPOGRAPHIC SURVEY BY: CRUSE & ASSOCIATES

CRITICAL AREA SURVEY BY: SEWALL & ASSOCIATES

THESE PLANS HAVE BEEN REVIEWED BY KITITAS COUNTY DEPARTMENT OF PUBLIC WORKS AND HAVE BEEN ACCEPTED FOR COMPLYING WITH THE REQUIREMENTS OF KITITAS COUNTY ROAD STANDARDS.

THE ENGINEER WHO HAS PREPARED THESE PLANS, BY EXECUTION AND/OR SEAL HEREOF DOES HEREBY AFFIRM RESPONSIBILITY TO THE COUNTY, AS A BENEFICIARY OF SAID ENGINEER'S WORK, FOR ANY ERRORS AND OMISSIONS CONTAINED IN THESE PLANS, AND APPROVAL OF THESE PLANS BY THE DEPARTMENT OF PUBLIC WORKS SHALL NOT RELIEVE THE ENGINEER WHO HAS PREPARED THESE PLANS OF ANY SUCH RESPONSIBILITY.

THESE CONSTRUCTION PLANS FOR ONE SOLAR ENERGY WERE PREPARED BY ME (OR UNDER MY DIRECT SUPERVISION) IN ACCORDANCE WITH THE REQUIREMENTS OF THE KITITAS COUNTY ROAD STANDARDS.

MARK D. KELLER
CENTURY WEST ENGINEERING, CORP.
09/23/2014

COUNTY ENGINEER

DATE

REUSE OF DOCUMENTS

THIS DRAWING, AND THE DESIGNS INCORPORATED HEREIN, AS AN INSTRUMENT OF PROFESSIONAL SERVICE, IS THE PROPERTY OF CENTURY WEST ENGINEERING CORPORATION, AND IS NOT TO BE USED, IN WHOLE OR IN PART, FOR ANY OTHER PROJECT WITHOUT THE WRITTEN CONSENT OF CENTURY WEST ENGINEERING CORPORATION.

© CENTURY WEST ENGINEERING CORPORATION



VERIFY SCALES

BAR IS ONE INCH ON ORIGINAL DRAWING. 1" = 0' _____

IF NOT ONE INCH ON THIS SHEET, ADJUST SCALES ACCORDINGLY.

| NO. | DATE | BY | APPR | REVISIONS |
|-----|------|----|------|-----------|
| | | | | |
| | | | | |
| | | | | |

| | |
|-----------------------------|---------------------|
| DESIGNED BY: MDK | DATE: 09/23/2014 |
| DRAWN BY: JJB | DWG NAME: G-1 |
| CHECKED BY: MDK | SCALE: AS SHOWN |
| PROJECT NO: 12461.001.01 | |

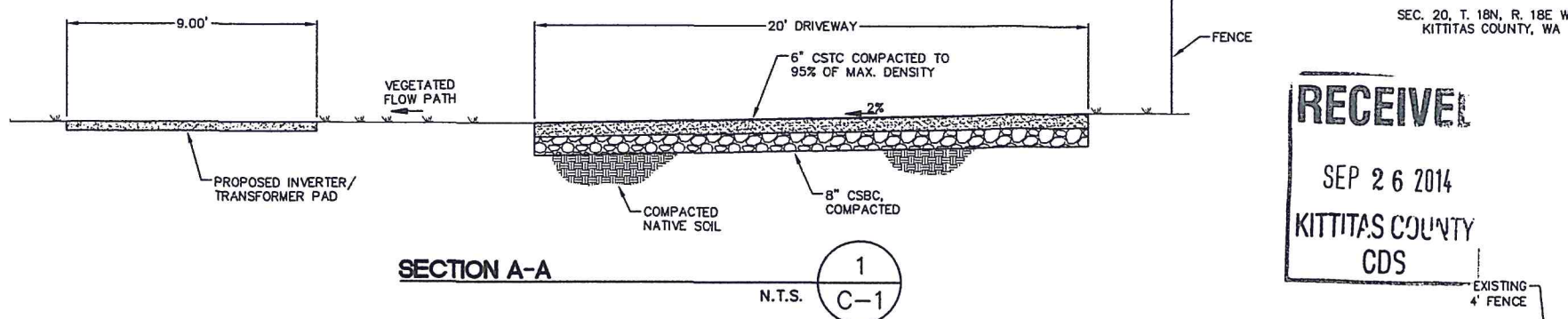
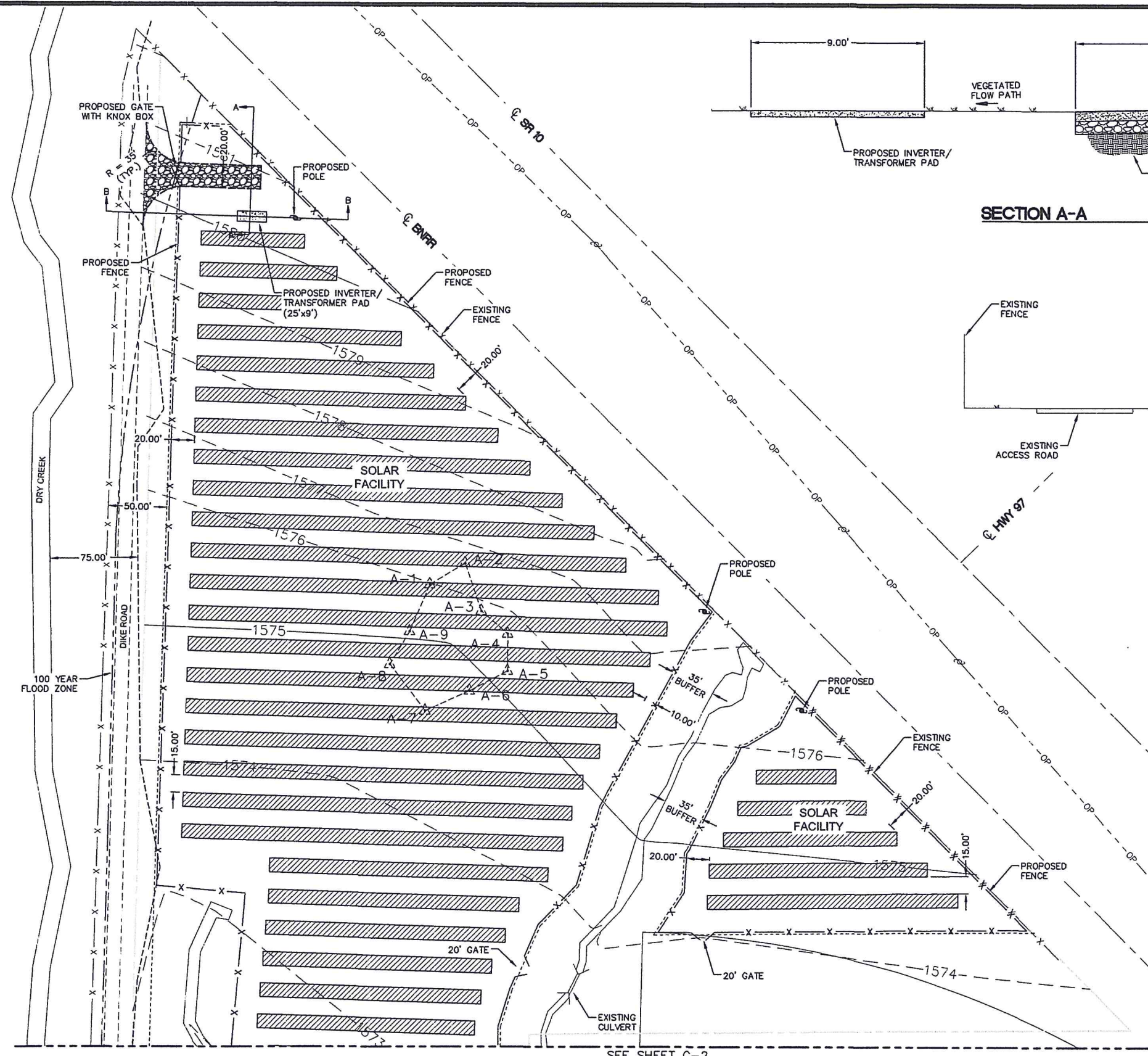
CENTURY WEST ENGINEERING CORPORATION

ELLENSBURG OFFICE 509.933.2477
421 NORTH PEARL ST. #206 509.624.0355 (FAX)
ELLENSBURG, WA 98926 WWW.CENTURYWEST.COM

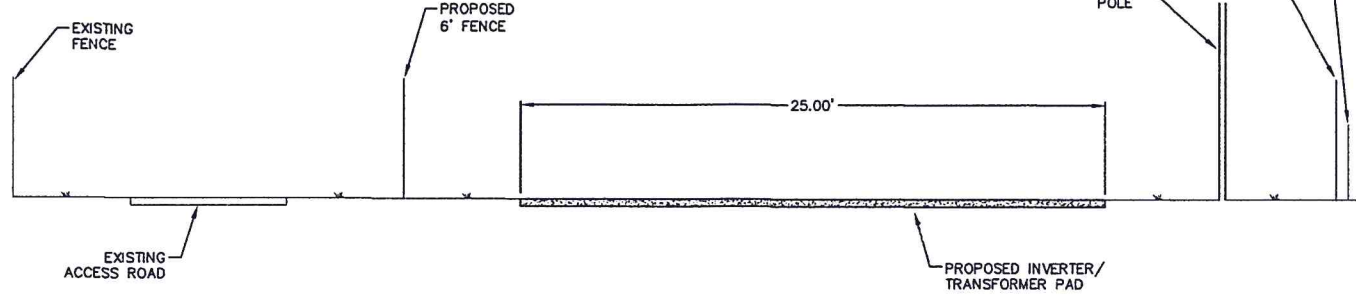
| | |
|-------------------------------------|---------------------|
| ONE ENERGY RENEWABLES – OSPREY SITE | DWG. NO. G-1 |
| COVER | SHEET NO. 1 OF 5 |

I:\UDD Projects\Private\One Energy_Solar\dwg\G-1.dwg

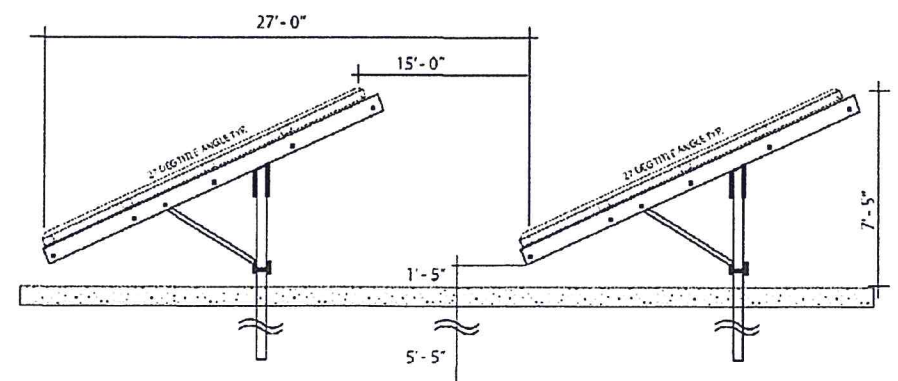
RECEIVED
SEP 26 2014
KITITAS COUNTY
CDS



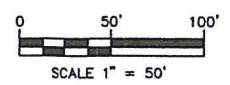
SECTION A-A
N.T.S. 1
C-1



SECTION B-B
N.T.S. 2
C-1



SOLAR PANEL SECTION
N.T.S. 3
C-1



REUSE OF DOCUMENTS

THIS DRAWING, AND THE DESIGNS INCORPORATED HEREIN, AS AN INSTRUMENT OF PROFESSIONAL SERVICE, IS THE PROPERTY OF CENTURY WEST ENGINEERING CORPORATION, AND IS NOT TO BE USED, IN WHOLE OR IN PART, FOR ANY OTHER PROJECT WITHOUT THE WRITTEN CONSENT OF CENTURY WEST ENGINEERING CORPORATION.



VERIFY SCALES

BAR IS ONE INCH ON ORIGINAL DRAWING.
IF NOT ONE INCH ON THIS SHEET, ADJUST SCALES ACCORDINGLY.

| NO. | DATE | BY | APPR | REVISIONS |
|-----|------|----|------|-----------|
| | | | | |
| | | | | |
| | | | | |

| | |
|-----------------------------|-----------------------|
| DESIGNED BY: MDK | DATE: 09/23/2014 |
| DRAWN BY: JJB | DWG NAME: C-1 |
| CHECKED BY: MDK | SCALE: H: 1" = 50' |
| PROJECT NO: 12461.001.01 | |



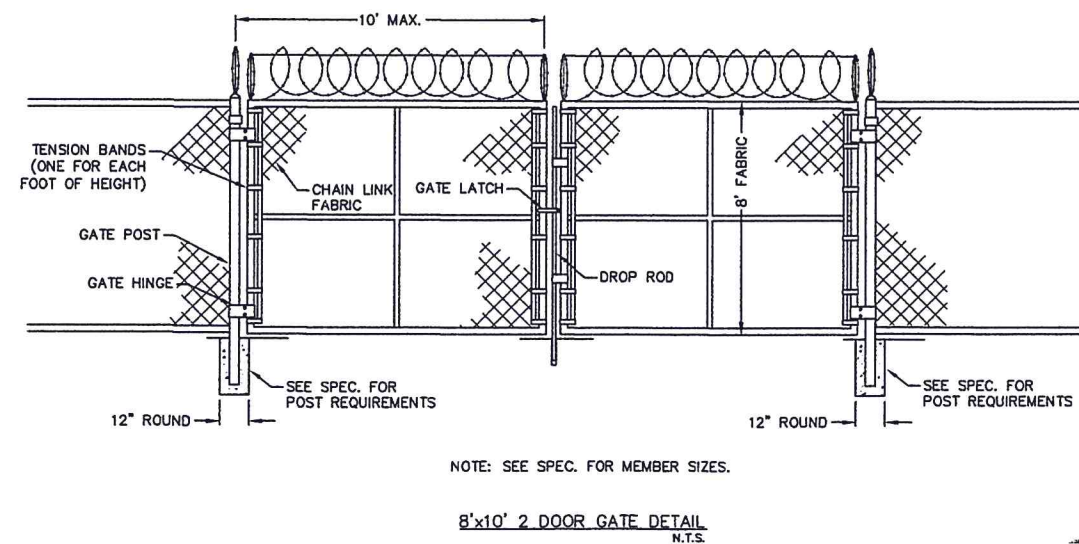
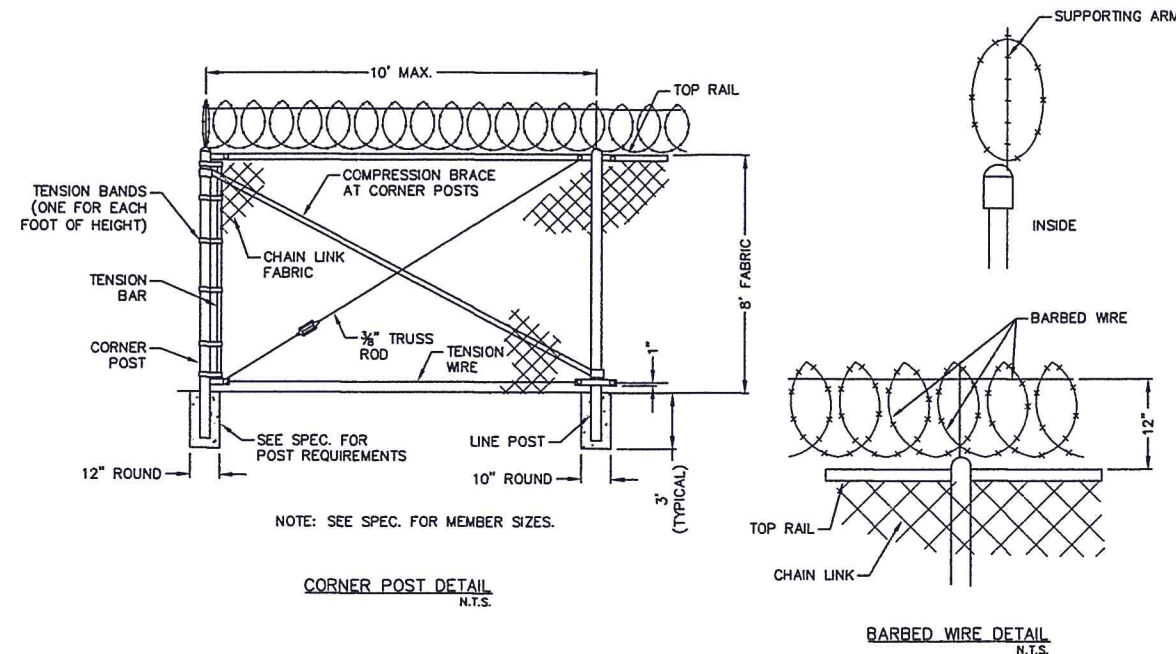
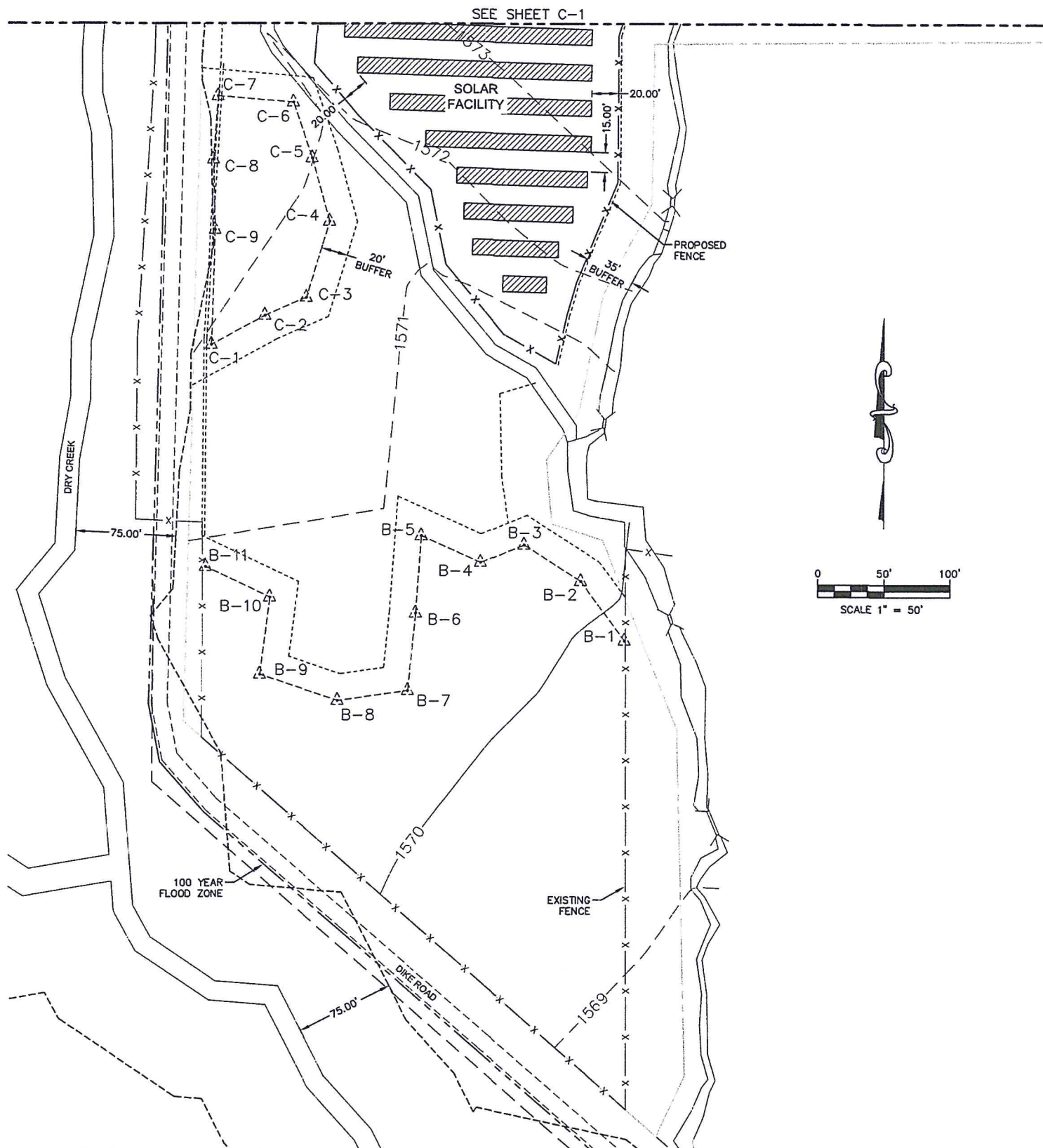
ELLENSBURG OFFICE 509.933.2477
421 NORTH PEARL ST. #206 509.624.0355 (FAX)
ELLENSBURG, WA 98926 WWW.CENTURYWEST.COM

ONE ENERGY RENEWABLES - OSPREY SITE

GRADING PLAN

DWG. NO.
C-1
SHEET NO.
2 OF 5

I:\DD Projects\Private\One Energy Solar\dwg\C-1.dwg



FENCE DETAIL

1
C-2
N.T.S.

RECEIVED
SEP 26 2014
KITITAS COUNTY
CDS

REUSE OF DOCUMENTS

THIS DRAWING, AND THE DESIGNS INCORPORATED HEREIN, AS AN INSTRUMENT OF PROFESSIONAL SERVICE, IS THE PROPERTY OF CENTURY WEST ENGINEERING CORPORATION, AND IS NOT TO BE USED, IN WHOLE OR IN PART, FOR ANY OTHER PROJECT WITHOUT THE WRITTEN CONSENT OF CENTURY WEST ENGINEERING CORPORATION.



VERIFY SCALES

BAR IS ONE INCH ON ORIGINAL DRAWING.
IF NOT ONE INCH ON THIS SHEET, ADJUST SCALES ACCORDINGLY.

| NO. | DATE | BY | APPR | REVISIONS |
|-----|------|----|------|-----------|
| | | | | |
| | | | | |
| | | | | |

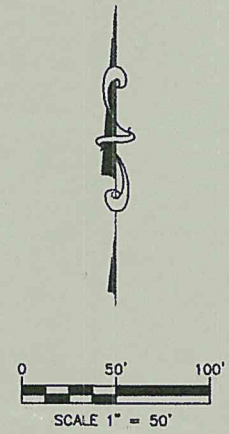
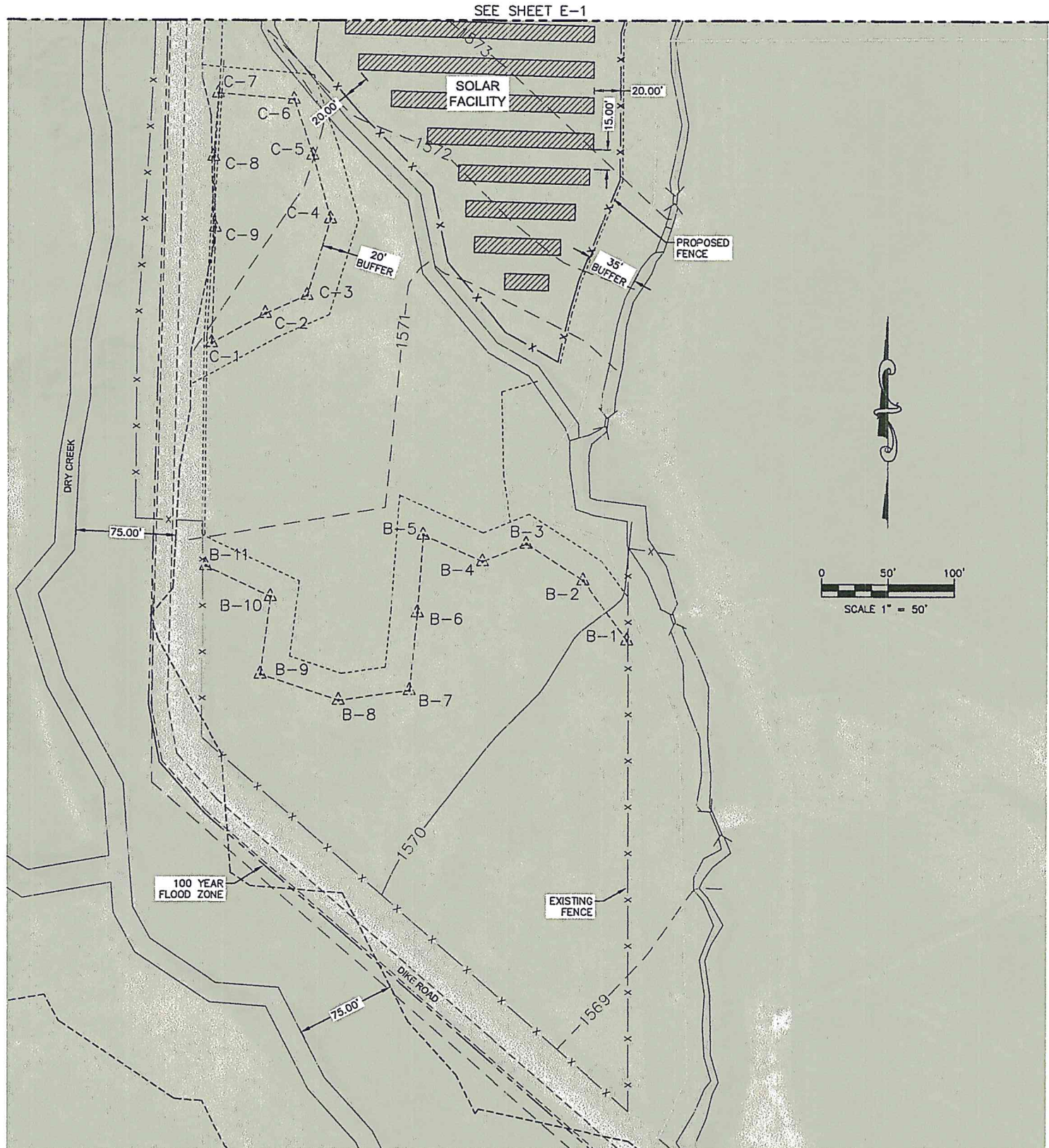
| | |
|-----------------------------|-----------------------|
| DESIGNED BY: MDK | DATE: 09/23/2014 |
| DRAWN BY: JJB | DWG NAME: C-2 |
| CHECKED BY: MDK | SCALE: H: 1" = 50' |
| PROJECT NO: 12461.001.01 | |

CENTURY WEST ENGINEERING CORPORATION

ELLENSBURG OFFICE | 509.933.2477
421 NORTH PEARL ST. #206 | 509.624.0355 (FAX)
ELLENSBURG, WA 98926 | WWW.CENTURYWEST.COM

| | |
|-------------------------------------|---------------------|
| ONE ENERGY RENEWABLES - OSPREY SITE | DWG. NO. C-2 |
| GRADING PLAN | SHEET NO. 3 OF 5 |

I:\000 Projects\Private\One Energy Solar\dwg\C-2.dwg



RECEIVED
SEP 26 2014
KITITAS COUNTY
CDS

REUSE OF DOCUMENTS
THIS DRAWING, AND THE DESIGNS INCORPORATED HEREIN, AS AN INSTRUMENT OF PROFESSIONAL SERVICE, IS THE PROPERTY OF CENTURY WEST ENGINEERING CORPORATION, AND IS NOT TO BE USED, IN WHOLE OR IN PART, FOR ANY OTHER PROJECT WITHOUT THE WRITTEN CONSENT OF CENTURY WEST ENGINEERING CORPORATION.
© CENTURY WEST ENGINEERING CORPORATION



VERIFY SCALES
BAR IS ONE INCH ON ORIGINAL DRAWING.
0" = 1"
IF NOT ONE INCH ON THIS SHEET, ADJUST SCALES ACCORDINGLY.

| NO. | DATE | BY | APPR | REVISIONS |
|-----|------|----|------|-----------|
| | | | | |
| | | | | |
| | | | | |

DESIGNED BY: MDK
DATE: 09/23/2014
DRAWN BY: JJB
DWG NAME: E-2
CHECKED BY: MDK
SCALE: H: 1" = 50'
PROJECT NO: 12461.001.01

CENTURY WEST ENGINEERING CORPORATION
ELLENSBURG OFFICE 421 NORTH PEARL ST. #206 ELLENSBURG, WA 98926
509.933.2477 509.624.0355 (FAX) WWW.CENTURYWEST.COM

ONE ENERGY RENEWABLES - OSPREY SITE
EXHIBIT 2

DWG. NO. E-2
SHEET NO. 5 OF 5

I:\LUD Projects\Private\One Energy Solar\dwg\E-2.dwg